

MONTHLY MEMBERSHIP PROGRESS REPORT

LOCATION INDIA

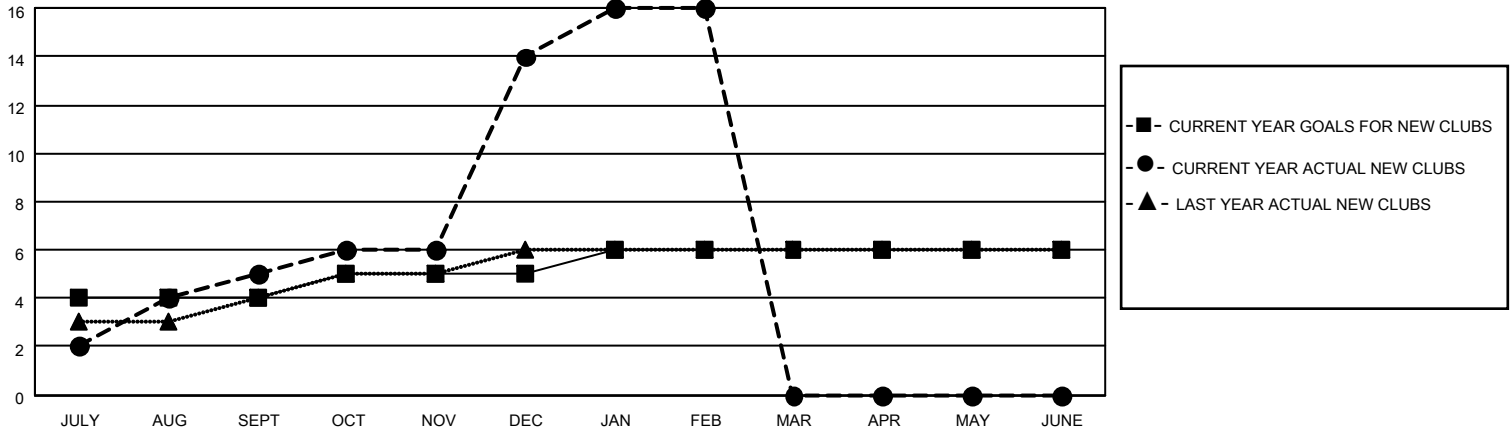
District 3234D2

Results as of: 2/28/2021

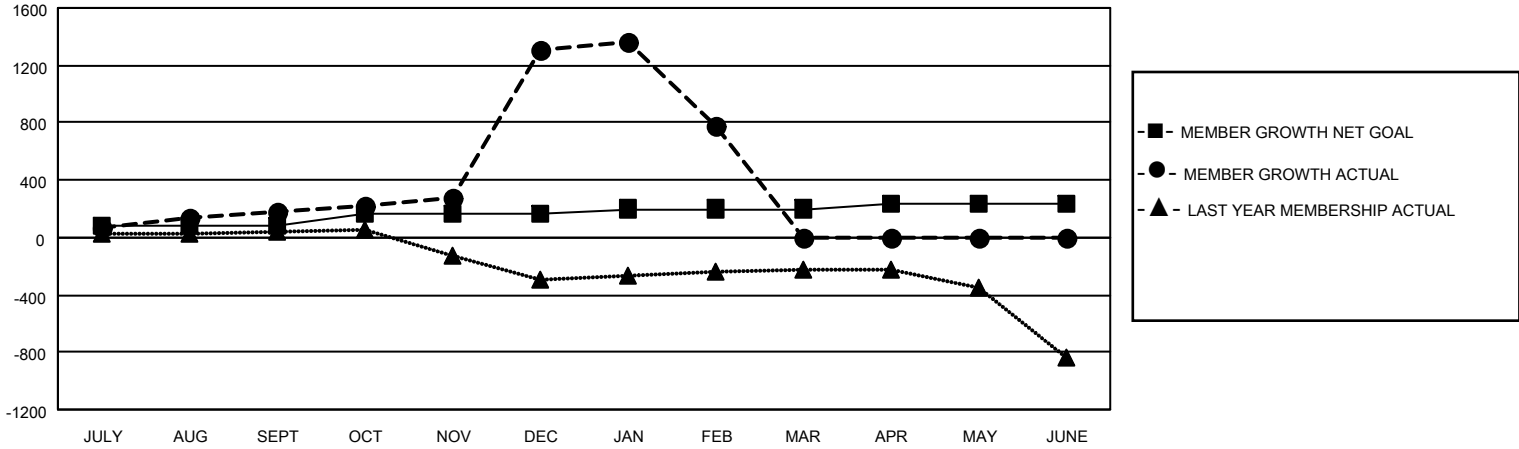
Clubs			
RESULTS FOR 2020-2021			
QUARTER	NEW CLUB GOAL	NEW CLUBS	DROPPED CLUBS
JULY/AUG/SEPT	4	5	3
OCT/NOV/DEC	1	9	0
JAN/FEB/MAR	1	2	25
APR/MAY/JUNE	0	0	0

Members			
RESULTS FOR 2020-2021			
QUARTER	MEMBER GROWTH NET GOAL	MEMBER GROWTH ACTUAL	DROPPED MEMBERS ACTUAL (including transfers)
JULY/AUG/SEPT	80	285	99
OCT/NOV/DEC	80	1542	410
JAN/FEB/MAR	40	265	778
APR/MAY/JUNE	40	0	0

GOALS AND ACTUAL NEW CLUBS CUMULATIVE



GOALS AND ACTUAL MEMBERS CUMULATIVE



DROPPED CLUBS: 28

88 CLUBS OF 151 ADDED 1 OR MORE NEW MEMBERS

GENDER DISTRIBUTION

MALE 4,422 (57.53%)
 FEMALE 3,264 (42.47%)

DROPPED MEMBERS

[CLICK HERE FOR CUMULATIVE MEMBERSHIP DATA](#)

DECEASED	12
CLUB CANCELLED	608
OTHER	667
TOTAL	1,287

TOTAL FAMILY UNIT MEMBERS	8,026
FAMILY MEMBERS PAYING HALF DUES	4,828